

SUNBOLTS

Photovoltaic Connection

PRODUCT
CATALOG



- Connectors
- DC Branch Cables
- PV Raw Cables

BizLink





R-Type (Cable Mount)

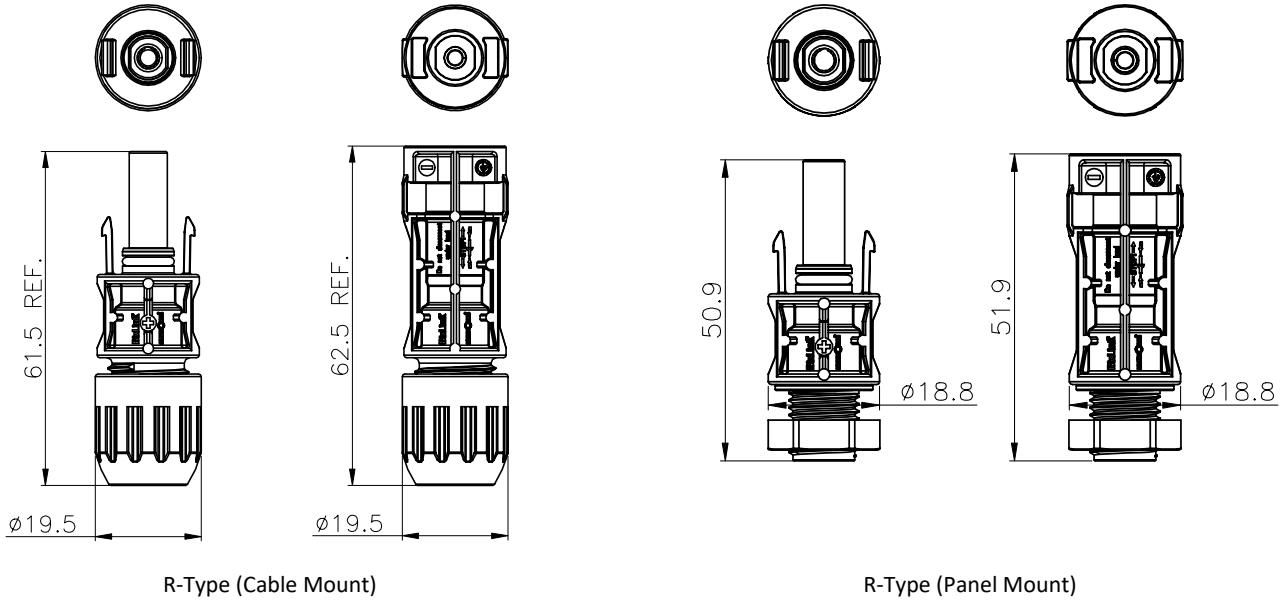
R-Type (Panel Mount)



- IP68 (1m, 24hrs) protection to withstand harsh weather like storm, floods or salt pollution
- Suitable for popular cable size and wider cable O.D. range
- Pre-assembled in-house, saves labor time and cost in field, and reduces loss cause by poor workmanship



Dimensions



Unit: mm

Specifications

S418 R-Type

Connector Type	Outward Lock, Snap-In
Rated Voltage	IEC/UL 1000V/1500V
Rated Current (TUV) *refer current de-rating curve	30 A for 2.5mm ² 40 A for 4.0mm ² 50 A for 6.0mm ² 70 A for 10.0mm ²
Rated Current (UL) *refer current de-rating curve	30 A for 14 AWG 35 A for 12 AWG 50 A for 10 AWG 70 A for 8 AWG
Contact Resistance (Mating)	10-14AWG/2.5-6.0mm ² : Typical ≤ 0.3 mΩ 8AWG/10mm ² : Typical ≤ 0.2 mΩ
Operation Ambient Temperature	-40°C ~ +90°C
Protection Degree	IP68 (1M/24Hrs)
Insulating Material	PPE
Terminal Material	Tin Plated Copper Alloy
Suitable Cable O.D.	A Type: 4.50mm-7.20mm B Type: 7.21mm-8.80mm
Flammability Class	UL94 V-0
UL Certification	UL6703 UL Certificate No. E343184
IEC Certification	IEC62852 TUV Certificate No. R 50483804



Headquarters

BizLink Technology, Inc.
47211 Bayside Parkway, Fremont, CA 94538, USA
Phone +1 510 252 0786 sales@bizlinktech.com

Global Sales Contacts

USA sales@bizlinktech.com
Europe sales@bizlinktech.com
China sales_gc@bizlinktech.com
India sales_india@bizlinktech.com

Japan sales_japan@bizlinktech.com
Malaysia sales_malaysia@bizlinktech.com
Taiwan sales_tw@bizlinktech.com

Connector Series**S418** 1500V/1000V

D-Type (Cable Mount)



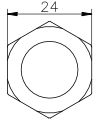
D-Type (Panel Mount)

BALART
GEPRÜFT
TYPE
APPROVED

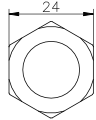
- Highest current rating among connectors used in PV DC application
- Support the cable range up to 16 sq-mm for IEC and 6 AWG for UL
- Higher voltage, higher current, and wider cable range
- Provide an optimal solution for customers to achieve "Balance of System"



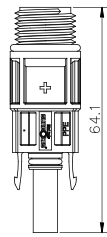
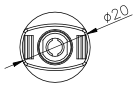
Dimensions



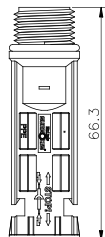
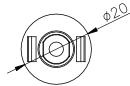
D TYPE NUT



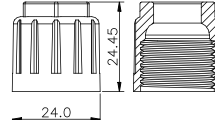
D TYPE NUT



**FEMALE PANEL
MOUNT CONNECTOR**



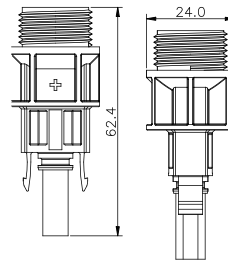
**MALE PANEL
MOUNT CONNECTOR**



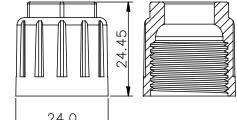
SECURING CAP



FEMALE HOUSING



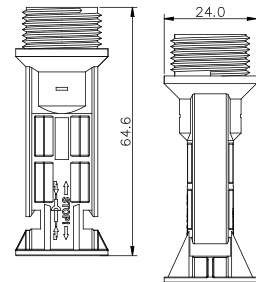
**FEMALE CABLE
MOUNT CONNECTOR**



SECURING CAP



MALE HOUSING



**MALE CABLE
MOUNT CONNECTOR**

Unit: mm

Specifications

D-Type

Connector Type	Outward Lock
Rated Voltage	IEC/UL 1000V/1500V
Rated Current (IEC)	70 A for 10mm ²
*refer current de-rating curve	90 A for 16mm ²
Rated Current (UL)	50 A for 8 AWG
*refer current de-rating curve	65 A for 6 AWG
Contact Resistance (mating)	TYP ≤ 0.30mΩ
Rated Impulse Voltage	16kV (1500V Type)/12kV (1000V Type)
Degree of Protection	IP68 (24H/1M)
Housing Material	PPE
Plating	Ag Plating
For Cable Cross Section/AWG	TUV 10/16sq-mm, UL 8/6AWG
Cable Outer Diameter	7.7mm-11.5mm
Flammability Class	UL94 V-0
Ambient Temperature	-40°C ~ +90 °C
Certification	TUV R50516294/UL E343184





- Rugged design and features for harsh weather and tough utilization
- Unique snap-in locking mechanism
- Ideal choice for parallel connection of strings
- IP68 outdoor protection (mating with BizLink connectors)
- Branch Connector: TÜV R50401202/UL E343184
- Housing Material: PPE
- Contact Material: Copper alloy with silver plating
- Required additional tool to disconnect



Dimensions



Unit: mm

Specifications

Connector Type	1M2F (S415-1)/1F2M (S415-2)
Rated Voltage	600V/1000V/1500V
Rated Current	50A
Contact Resistance	TYP $\leq 0.5\text{m}\Omega$
Degree of Protection	IP68 (mating with BizLink connector)
Temperature Range	-40°C ~ +90°C
Flammability Class	UL94 V-0
UL Certification	E343184
TÜV Certification	R50401202



Headquarters

BizLink Technology, Inc.
47211 Bayside Parkway, Fremont, CA 94538, USA
Phone +1 510 252 0786 sales@bizlinktech.com

Global Sales Contacts

USA sales@bizlinktech.com
Europe sales@bizlinktech.com
China sales_gc@bizlinktech.com
India sales_india@bizlinktech.com

Japan sales_japan@bizlinktech.com
Malaysia sales_malaysia@bizlinktech.com
Taiwan sales_tw@bizlinktech.com



- Over current protection for module strings
- Support the PV fuse rating 2-25A with UL recognized
- IP67 waterproof and dustproof protection
- Easy swappable for connector after fuse burnt
- Housing Material: PPE
- Contact Material: Copper alloy with Tin plated
- UL E351893



Connector Series

S417 Fuse Connector UL 1500V/UL 1000V

SUNBOLTS

Photovoltaic Connection

Dimensions



Unit: mm

Specifications

	S417-01051	S417-01050
Rated Voltage	1500V	1000V
Certified Current	30A	30A
Rated Current	15A@75°C, 20A@50°C, 25A@50C	15A@75°C, 20A@50°C
Degree of Protection	IP67	IP67
Operation Temperature	2-15A: -40C ~ +75C, 20-25A: -40C ~ +50C	2-15A: -40C ~ +75C, 20-25A: -40C ~ +50C
Flammability Class	UL94 V-0	UL94 V-0
Recommendation Fuse	1500V, 2-25A	1000V, 2-25A
Fuse Dimensions	10mm x 85mm	10mm x 38mm
Compatible Fuse Brand	Littelfuse/Bussmann/Mersen	



BizLink

www.bizlinktech.com

Headquarters

BizLink Technology, Inc.
47211 Bayside Parkway, Fremont, CA 94538, USA
Phone +1 510 252 0786 sales@bizlinktech.com

Global Sales Contacts

USA sales@bizlinktech.com
Europe sales@bizlinktech.com
China sales_gc@bizlinktech.com
India sales_india@bizlinktech.com

Japan sales_japan@bizlinktech.com
Malaysia sales_malaysia@bizlinktech.com
Taiwan sales_tw@bizlinktech.com

© 2022 BizLink Group. All rights reserved.
BizLink, Sunbolts, and other trademarks are the trademarks of BizLink Group or its subsidiaries.
Specifications are subject to change without prior notice.

March 2022



- Over current protection for module strings
- Support the PV fuse rating 2-32A with UL listed
- IP67 or IP68 waterproof and dustproof protection
- Max 75°C operation temperature to withstand extreme climate
- Optional connection by connector or cable
- In-line fuse design with assembly type or overmold type
- UL E351893



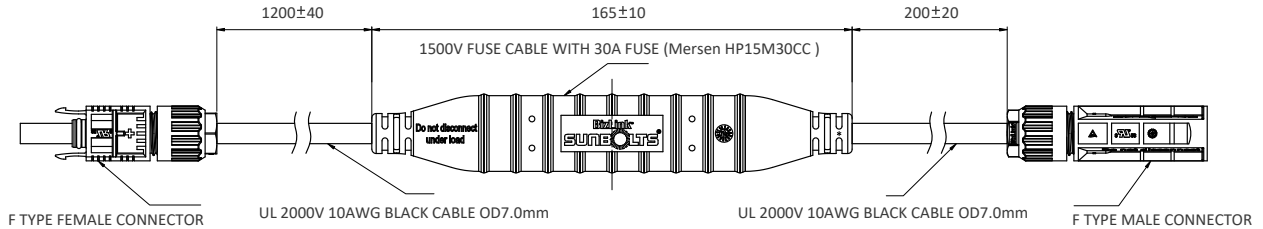
Inline Fuse

S417 Fuse Cable / Fuse Holder UL 1500V

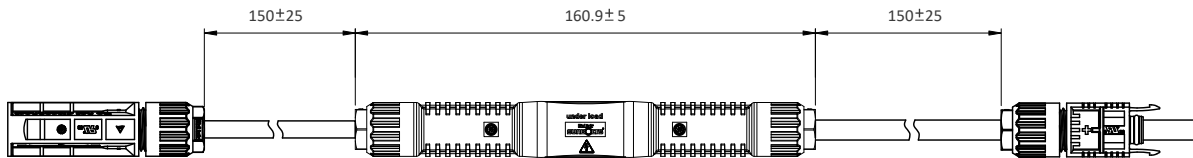
SUNBOLTS

Photovoltaic Connection

Dimensions



Fuse Cable



Fuse Holder

Unit: mm

Specifications

	Fuse Cable / S417-Axxxx	Fuse Holder / S417-0xxxx
Rated Voltage	1500Vdc	1500Vdc
Certified Current	32A	30A
Rated Current	32A @ 75°C	15A @ 75°C, 20-25A @ 50°C
Housing Protection	Overmold	Assembly
Degree of Protection	IP68 (1m, 1hr)	IP67
Flammability Class	UL94 V-0	UL94 V-0
Wire Size	12-8AWG	14-10AWG
Fuse Optional	1500V, 2-32A, Crimped cable	1500V, 2-25A, Assembled
Fuse Dimension	11.5mm x 112mm	10mm x 85mm
Compatible Fuse Brand	Littelfuse / Mersen	Littelfuse / Mersen / Bussmann



BizLink

Headquarters

BizLink Technology, Inc.
47211 Bayside Parkway, Fremont, CA 94538, USA
Phone +1 510 252 0786 sales@bizlinktech.com

Global Sales Contacts

USA sales@bizlinktech.com
Europe sales@bizlinktech.com
China sales_gc@bizlinktech.com
India sales_india@bizlinktech.com

Japan sales_japan@bizlinktech.com
Malaysia sales_malaysia@bizlinktech.com
Taiwan sales_tw@bizlinktech.com

Branch Cable**DC Branch Cable 1500V/1000V**

1 to 2



1 to 3



2 to 3



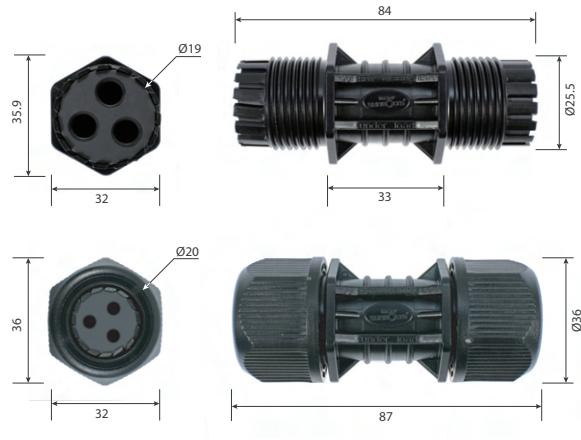
3 to 3



- Consist of assembled, hermetically-sealed branch connection with choices of pre-assembled connectors terminating each PV cable ends
- Eliminate the associated high impedance from bad crimps and the need for in-field stripping and crimping



Dimensions

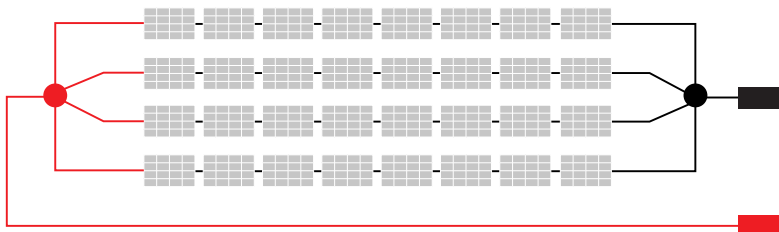


Customization Services

- Connectors
- Cable Length
- Cable Types
- Branch Trunks

Unit: mm

Configuration Info



- Parallel multiple strings in one output
- Require shorter cable length with lower resistance
- Increase power efficiency in field

Specifications

Housing	PPO
Rated Voltage	1500V/1000V
Rated Current	TÜV 70A/UL 65A
Protection Degree	IP68 (mating with BizLink S418 connectors)
Temperature Range	TÜV -40°C ~ +90°C/UL -40°C ~ +85°C
Cable Size	2.5/4/6/10 mm ² or 6/8/10/12/14 AWG
Connector Option	BizLink S418, MC4, MC4-EVO2, H4, or UTX



Headquarters

BizLink Technology, Inc.
 47211 Bayside Parkway, Fremont, CA 94538, USA
 Phone +1 510 252 0786 sales@bizlinktech.com

Global Sales Contacts

USA sales@bizlinktech.com
Europe sales@bizlinktech.com
China sales_gc@bizlinktech.com
India sales_india@bizlinktech.com

Japan sales_japan@bizlinktech.com
Malaysia sales_malaysia@bizlinktech.com
Taiwan sales_tw@bizlinktech.com

Branch Cable**DC Branch Fuse Holder 1500V/1000V**

1 to 2



1 to 3



2 to 3



3 to 3



- Consist of assembled, hermetically-sealed branch connection with choices of pre-assembled connectors terminating each PV cable ends
- Eliminate the need for in-field stripping and crimping and the associated high impedance from bad crimps



Branch Cable

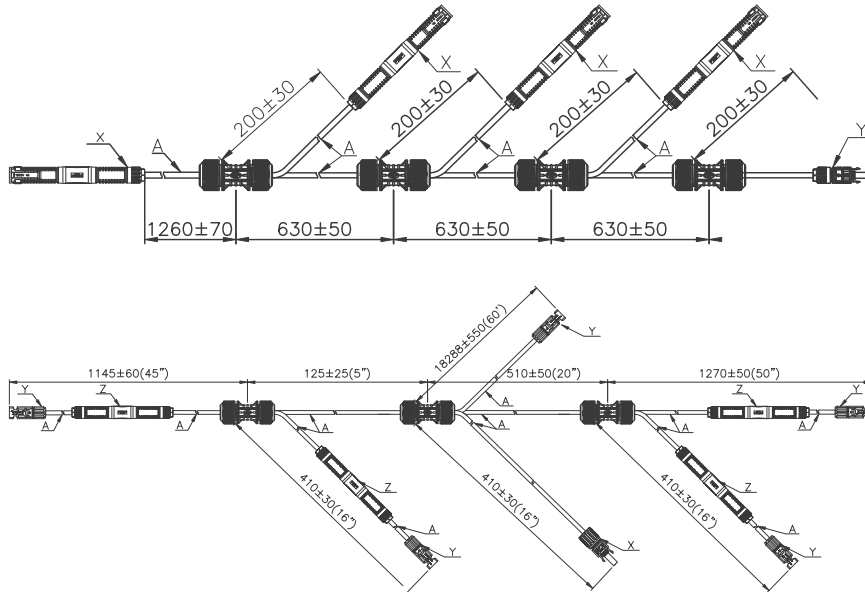
DC Branch Fuse Holder 1500V/1000V

SUNBOLTS

Photovoltaic Connection

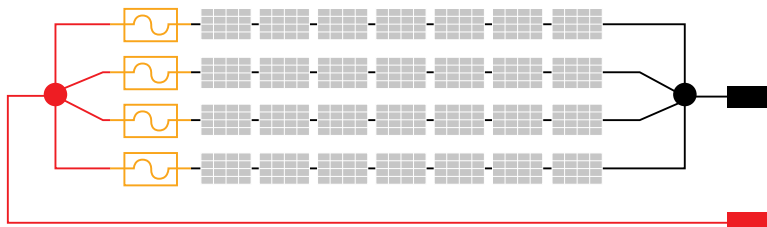
Dimensions

Customization Service



Unit: mm

Configuration Info



- Parallel multiple strings in one output
- Require shorter cable length with lower resistance
- Increase power efficiency in field

Specifications

Rated Voltage	1500V/1000V
Rated Current	Connector-TÜV 70A/UL 65A/Fuse Holder-15A @+75C/20A @+50C
Protection Degree	IP67
Operation Temperature	-40°C ~ +75°C
Cable Size	2.5/4/6/10 mm ² or 6/8/10/12/14AWG
Connector Option	BizLink S418, MC4, MC4-EVO2, H4, UTX
Fuse Specification	1500V, 15A @+75C/20A @+50C, 10mm x 85mm/1000V, 15A @+75C/20A @+50C, 10mm x 38mm



BizLink

Headquarters

BizLink Technology, Inc.
47211 Bayside Parkway, Fremont, CA 94538, USA
Phone +1 510 252 0786 sales@bizlinktech.com

Global Sales Contacts

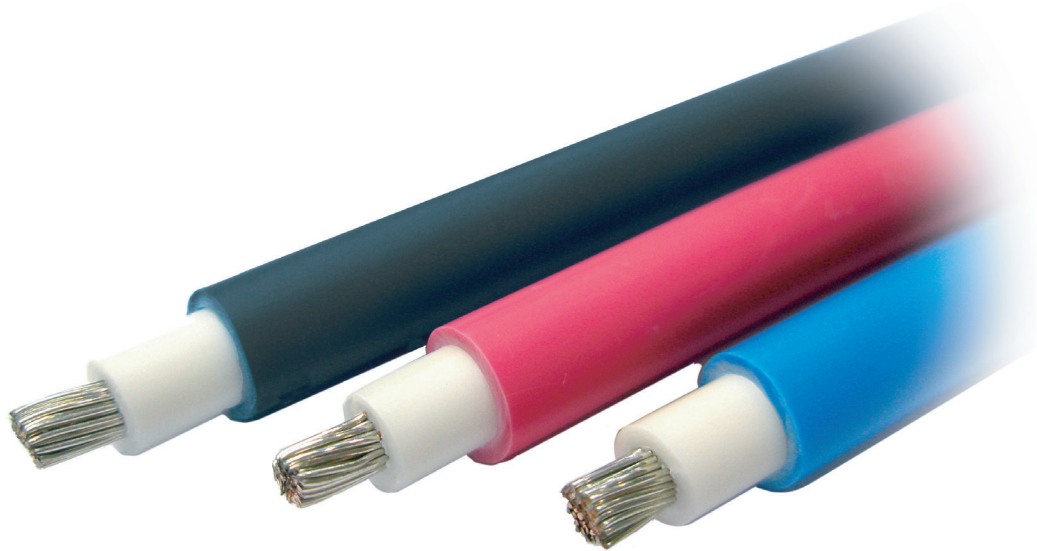
USA sales@bizlinktech.com
Europe sales@bizlinktech.com
China sales_gc@bizlinktech.com
India sales_india@bizlinktech.com

Japan sales_japan@bizlinktech.com
Malaysia sales_malaysia@bizlinktech.com
Taiwan sales_tw@bizlinktech.com

www.bizlinktech.com

© 2022 BizLink Group. All rights reserved.
BizLink, Sunbolts, and other trademarks are the trademarks of BizLink Group or its subsidiaries.
Specifications are subject to change without prior notice.

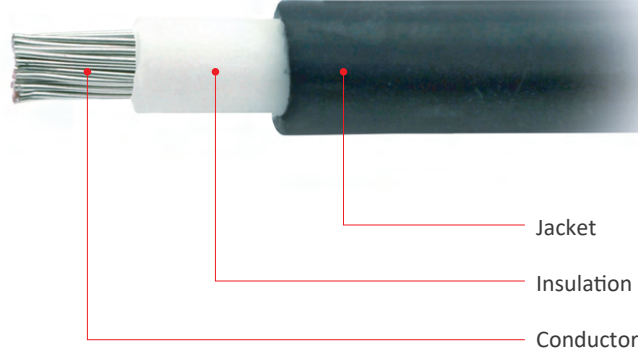
March 2022



- Rate Voltage: 600V/1000V AC or 1500V DC (TÜV), 600V/1000V and 2000V AC (UL) or 1500V DC (S-JET)
- Min. Bending Radius: 4 x OD (OD<7.0mm), 6 x OD (OD>7.0mm)
- Conductor: Tinned Copper
- Insulation: XLPO (TÜV, UL)/XLPE (PSE EM CE/ F, S-JET)
- Jacket: XLPE (TÜV, UL, S-JET)/FRPE (PSE EM CE/F)
- TÜV 50347672/UL E318358/PSE JET 2381-12004-1001/S-JET 1665-12024-001
- Flame Tested: EN 60332-1-2
- RoHS Compliant: Halogen Free
- Rate Temperature: -40°C ~ +90°C (TÜV, UL, S-JET), -25°C ~ +90°C (PSE)



Configuration



Specifications

Cross Section [mm ²] TÜV	1.5	2.5	4	6	10	16
Cross Section [mm ²] PSE	N/A	2	3.5	5.5	8	N/A
Cross Section [mm ²] S-JET	1.25	2	3.5	5.5	8	14
AWG UL	16	14	12	10	8	6
Conductor Composition EN50618 (TÜV)	28/0.25	46/0.25	50/0.3	78/0.3	76/0.4	122/0.4
Conductor Composition PSE	N/A	7/0.6	7/0.8	7/1.0	7/1.2	N/A
Conductor Composition UL	26/0.254	43/0.25	48/0.30	76/0.30	65/0.404	105/0.404
Conductor Composition S-JET	23/0.26	38/0.26	53/0.29	83/0.29	63/0.40	112/0.40
Outer Diameter [mm] EN50618 1500V (TÜV)	4.5	5.0	5.5	6.1	7.0	8.4
Outer Diameter [mm] TÜV 600V/1000V	4.1	4.5	5.0	6.0	7.0	8.8
DualLayerOD [mm] TÜV 600V/1000V & UL 1000V	5.4	5.8	6.3	6.9	8.5	10.4
DualLayerOD [mm] UL 600V	4.6	5.0	5.5	6.1	7.7	9.5
DualLayerOD [mm] UL 1000V/2000V	5.4	5.8	6.3	6.9	8.2	10.0
DualLayerOD [mm] TÜV 1500V & UL 1000V/2000V	5.9	6.3	6.5	7.4	9.0	10.4
Outer Diameter [mm] PSE EM CE/F	N/A	6.4	7.0	8.0	8.6	N/A
Outer Diameter [mm] S-JET	5.0	5.5	6.1	6.8	7.5	8.8
TÜV Rated Current* [A] DC	29	39	52	67	93	125
UL Rated Current	29	37	49	65	88	120
PSE Rated Current	N/A	38	51	69	89	N/A
S-JET Rated Current	27	37	51	68	85	120
Conductor Resistance [Ω/km] TÜV	13.7	8.21	5.09	3.39	1.95	1.24
Conductor Resistance [Ω/km] UL	14.6	8.78	5.53	3.48	2.27	1.43
Conductor Resistance [Ω/km] PSE	N/A	9.24	5.2	3.33	2.31	N/A
Conductor Resistance [Ω/km] S-JET	17.5	9.63	5.41	3.47	2.41	1.35
Colors	Black, Red and Blue (TÜV, UL, S-JET); Black (PSE)					

